

# Callahan School Newsletter



January 14, 2009

## A Message from The Principal.....

Happy New Year!! It is hard to believe that the holidays are already behind us. While it was a busy time of year, it was nice to have some down time with our families. I hope every had a wonderful holiday season.

Just a couple of reminders as we begin our January.....We always try to send our students outside

as often as we can, however, some students don't come to school dressed appropriately. All children should have a winter hat, jacket, and glove at this time of year.

Please remember that there are many upcoming winter activities. If you can join us that would be great. If you can help out at any

events, that would even be better.

In closing, I am looking forward to a great 2010.

Please remember I am only a phone call away or drop me an e-mail if you have any questions.

568-1330

brissetted@bsd-ni.net



## What's On Tap For JANUARY....

Please check out our events that are taking place in January.

**PTF Meeting-** Please join us on January 5, 2010 at 6:30PM in

the school media center for our monthly PTF meeting.

**Yearbook Committee Meeting-** There will be a meeting

with the LifeTouch representative on January 7, 2010 from 6-8PM. This is to introduce the webase software to everyone.

*Cont. Page 2*

### Dates To Remember:

January 5-PTF Meeting

January 7-Yearbook Committee Meeting in Media Center

January 14- School Spelling Bee

January 18-Martin Luther King Day (No School)

January 19- H1N1 Clinic at Steere Farm Elementary School (under 10)

January 21- SIT meeting

January 22- Crazy Hat Day!!

January 22- Progress Reports

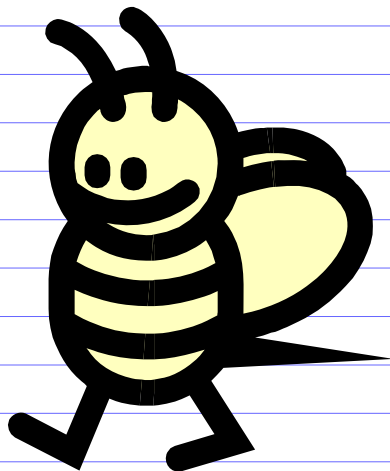
January 26- District Spelling Bee at BMS



## What's on Tap for January.....

*Continued from page 1*

**School & District Spelling Bees-** Our 4th and 5th grade classroom champions will battle it out for the top 5 spots at our annual school spelling bee. Those five winners and an alternate will represent Callahan at our district spelling bee. At the district spelling bee, students from 4-8 grade will compete for a chance to represent Burrillville at the state spelling bee. The district spelling bee will take place at the Burrillville Middle School auditorium



on January 26, 2010 at 6:00PM. In case of a weather related cancellation, it will be held on Thursday, January 28, 2010 at 6:00PM. Please join us if you can to cheer on our Callahan students.

**Martin Luther King Day-** Please remember that there will be no school on Monday, January 18, 2010 due to the holiday.



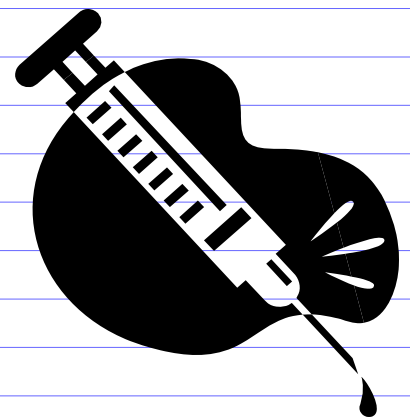
**Second H1N1 Vaccine Clinic-** The second round of vaccines will be taking place on January 19, 2010 from 4-8PM at the Steere Farm Elementary School. This is the second dose for students who were under 10 years of age at the time of their 1st shot. Please look for more information that will be forthcoming soon.

**SIT Meeting-**Our School improvement team will be meeting on Thursday, January 21, 2010. This is a change in schedule due to the H1N1 Clinic on our regularly schedule meeting evening. We will be working on our mission statement for our 2010-2011 SIP.

**Crazy Hat Day-**On January 22, 2010. Students can wear their craziest hat for the day!!!!



**Progress Reports-**2nd trimester progress reports are going home on Friday, January 22, 2010.



## H1N1 2nd Dose Information

# Important Notice

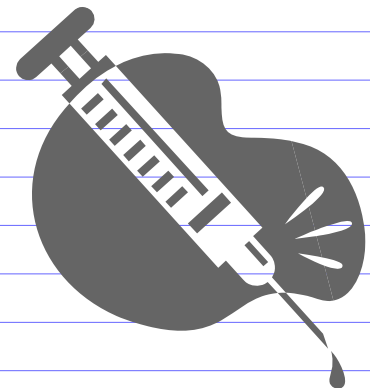
On Tuesday January 19, A.T.Levy, Steere Farm, and W.L.Callahan Elementary School's clinic for second doses of H1N1 flu vaccine will take place at Steere Farm Elementary School. The Clinic will run from 4:00PM until 8:00PM at Steere Farm Elementary School. Only A.T. Levy, Steere Farm, and W.L.Callahan students who were younger than 10 years of age at the time of our H1N1 flu vaccination clinic in the fall can be vaccinated at this upcoming clinic. Children who were older than 10 years of age at the time of our fall clinic do not need second doses of H1N1 flu vaccine.

Our clinic for second doses of H1N1 flu vaccine will be very similar to the clinic that we held in the fall. Please note your time for your child on that evening:

- A-D Come between 4pm and 5pm
- E-K Come between 5pm and 6pm
- L-Q Come between 6pm and 7pm
- R-Z Come between 7pm and 8pm

Sincerely,

The Burrillville School Department





### Callahan School

75 Callahan School Street  
Harrisville, RI 02830  
Phone: 401-568-1330  
Fax: 401-568-1328  
E-mail: brissetted@bsd-ri.ri.net



Putting Children First

### Volunteering

If you are interested in helping out at any school event, volunteering in our schools or chaperoning a field trip, please remember that you have to have a BCI check. You can fill out one of these forms at the Callahan School and have it notarized (Mr. Brissette is a notary). After the form is complete, we will forward it to the Burrillville Police Department. This needs to be done every new school year.

### Volunteering

### Good Deeds at Callahan...

**Mr. Feinstein**-During the month of December, the Callahan students and staff were able to collect \$338.75 to give to help feed the hungry. Mr. Feinstein was able to match that contribution by three times the amount. We have just received a check in the amount of \$1,016.25 our school's use. Thank you to all of the families and staff who made this possible!!!!

**Good Deeds**

### Did You Know.....

There are many items we collect here at the Callahan School. These items are collected and shipped off to the various participating agencies and in turn, they give us money to use for our students. Some of the items we collect here at Callahan are as follows:

- **Empty Capri Sun Drink Pouches**

We are able to get 2 cents for every Capri sun drink pouch we recycle.

- **IGA & Dino's Receipts**

We get money for every \$500

worth of receipts.

- **Box Tops for Education**

To date we have collected \$463 worth of box tops!!!!

- **Campbell Soup Labels**

The Campbell soup labels help us buy items for the Physical Education Program.

- **Printer cartridges**

Staples gives us gift certificates for every cartridge we turn in.

- **Soda Can Tabs**

These go to Hasbro Children's Hospital for medical equipment.